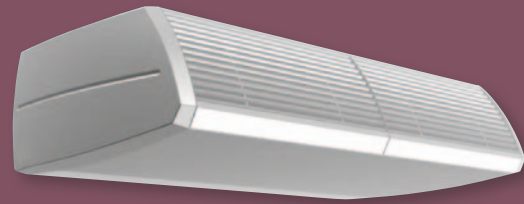




# RTD-20

## AIR CURTAIN MODE



RTD Controller

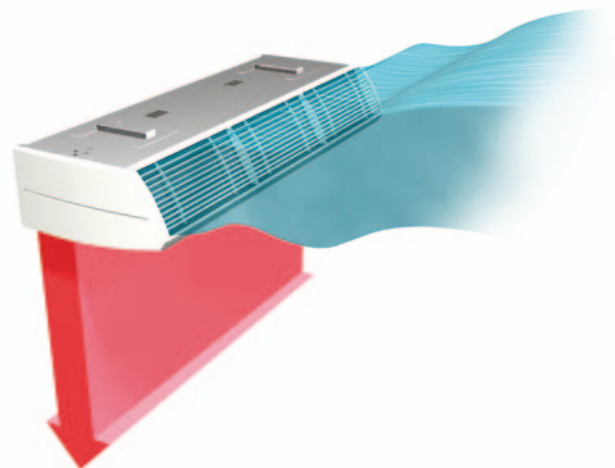
The RTD-20 'Air Curtain Mode' takes control of the Biddle air curtain to give maximum efficiency and comfort. Intelligent monitoring learns and predicts the operational mode of the unit.

### FEATURES

- Stand alone or integration with Retail Economiser for complete store control
- Increased efficiency and reduced CO<sub>2</sub>
- Auto mode selection between HEATING and FAN ONLY based on external temperature
- Automated controls – no user interaction required
- Door switch interlock
- Intelligent heating capacity optimisation
- Adjustable setpoint limits
- Interlock with other Daikin units to prevent mode clashes
- Simple BMS integration, monitoring and control
- Ease of commissioning and service via a dedicated service mode
- Connection to Daikin centralised controllers (I -Touch Controller, I-Manager)

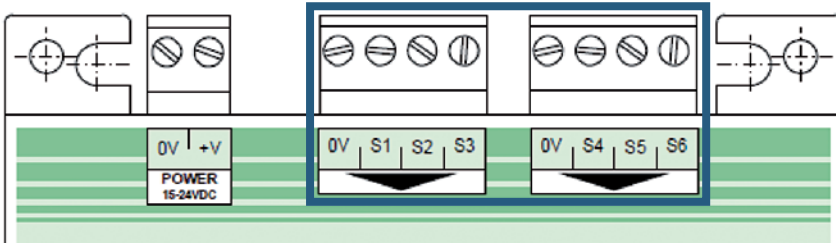
### CONTROL POSSIBILITIES

By sampling outdoor temperature and assuming capacity control, the RTD-20 can control the air curtain and minimise its power requirement whilst still providing all of the high quality benefits that a Biddle air curtain offers such as constant air velocity and patented rectifier technology.



## HARD WIRED CONTROL

The RTD-20 input hard wired controls are via resistance inputs at the top of the controller. All contacts are linked to the common 0V contact to close (make).



The following table shows which functions are controlled by which contacts.

CONTACT	DESCRIPTION	AUTO (RTD MAIN)
S1	Setpoint	0.3..10kΩ : 16..32°C (Remote Controller Setpoint Locked) Open Circuit: Remote Controller Setpoint Unlocked Short Circuit: Lock Setpoint (Setpoint Upper Limit -1) Primary Setpoint if Retail Secondary Zone
S2	Auxilliary space temp / Primary Interlock	10kΩ NTC Thermistor Recommended part: RS Stock No. 813-806, Open Circuit: Control from Indoor Unit Sensor, Closed Circuit : Control Interlock with Primary Zone
S3	Outdoor temperature	10kΩ NTC Thermistor Recommended part: RS Stock No. 813-828
S4	Door closed	Door Closed = Closed Circuit, Door Open = Open Circuit
S5	Enable	On = Closed Circuit, Off = Open Circuit (last touched)
S6	Commission	Open Circuit: Normal, Short Circuit: Commission Mode

For further information please refer to RTD-20 Control Interface Installation and Operating Instructions.



Authorised User No. 02061

Visit [www.eca.gov.uk/etl](http://www.eca.gov.uk/etl) and type 'Daikin' in the quick search box for details of the latest ECA qualifying Daikin units

[www.daikin.co.uk](http://www.daikin.co.uk)

Daikin products are distributed by:



Daikin units comply with the European regulations that guarantee the safety of the product.

Daikin Europe N.V. participates in the Eurovent Certification Programme for Air Conditioners (AC), Liquid Chilling Packages (LCP) and Fan Coil Units (FC); the certified data of certified models are listed in the Eurovent Directory. Multi units are Eurovent certified for combinations up to 2 indoor units.

The present leaflet is drawn up by way of information only and does not constitute an offer binding upon Daikin UK. Daikin UK has compiled the content of this leaflet to the best of its knowledge. No express or implied warranty is given for the completeness, accuracy, reliability or fitness for particular purpose of its content and the products and services presented therein. Specifications are subject to change without prior notice. Daikin UK explicitly rejects any liability for any direct or indirect damage, in the broadest sense, arising from or related to the use and/or interpretation of this leaflet. All content is copyrighted by Daikin UK.

